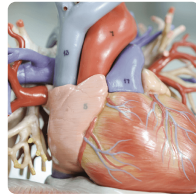


# Medeshamstede Academy

## Class plan - g. Upper Pathway 3 Cycle B



Blood Heart

Science



Tomorrow's World

Computing



Y6 Computing

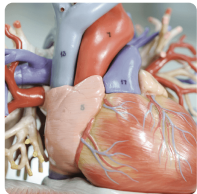
Computing



Frozen Kingdoms

Geography

Planned term	Autumn 1 (header is a placeholder)	Autumn 2 (header is a placeholder)	Spring 1 (header is a placeholder)	Spring 2 (header is a placeholder)
Mathematics	Maths at an appropriate individual level to support qualification pathway Ordering and comparing up to 1000000, Roman numerals up to M, rounding	Maths at an appropriate individual level to support qualification pathway 4 Operations-long multiplication and division, word problems of addition and subtraction	Functional maths using White Rose Maths at an appropriate individual level Time & Money -change, beginning budgeting, problems with time	Functional maths using White Rose Maths at an appropriate individual level. Shape -Identify and measure angles, symmetry, using nets
English	English to support qualification pathway Poetry and Fiction Exploring Narratives. Exploring inference in poetry.	English to support qualification pathway. Poetry and Fiction Exploring Different narratives: Being able to sequence longer stories and to write detailed descriptions of key scenes.	Media Texts and Poetry Exploring Poetry Developing understanding of figurative language including metaphors, similes and personification. Students working on qualification pathways	Media Texts and Poetry Writing own poems and raps Creative poetry with an emphasis on rhythm and using non-standard English. Students working on qualification pathways
Suggested text	Of Mice and Men - John Steinbeck	The Hunger Games - Suzanne Collins		
Communication and Language	Black History Month presentations	Film reviews - to publish on school website.		
Reading and Phonics Skills	RWI Fresh start (for those requiring phonics mastery) Word reading	RWI Fresh start (for those requiring phonics mastery) Word reading	RWI Fresh start (for those requiring phonics mastery) Word reading	RWI Fresh start (for those requiring phonics mastery) Word reading
Science	Human Machines - Investigating and reporting on how the body responds to a variety of different stimuli	Human Machines - Investigating and reporting on how the body responds to a variety of different stimuli	Forces and Motion Investigating and reporting on effects of a range of forces and movements	Forces and Motion Investigating and reporting on effects of a range of forces and movements
Humanities	Africa & Black History Month The countries in the continent of Africa. A more detailed exploration of physical and political maps of Africa and developing individual research and presentation skills.	The Middle East How political are sporting events and sports team? Looking at the advantages and disadvantages of Middle Eastern influence and investment in sports teams.	Democracy and Change Taking a Role in Society What happens in a general election?.	Democracy and Change Taking a Role in Society. How do I prepare for being able to vote?
Personal, social and health education	PSHE - Jigsaw at an appropriate level-(Being Me in My World)'Who am I and how do I fit?'	PSHE-Jigsaw at an appropriate level-(Celebrating Difference) Respect for similarity and difference. Anti-bullying and being unique	PSHE- Jigsaw at an appropriate level- (Dreams and Goals) Aspirations, how to achieve goals and understanding the emotions that go with this	PSHE-Jigsaw at the appropriate level -(Healthy Me) Being and keeping safe and healthy
RE	RE - Equals Curriculum (Beliefs and values The nature of God and religion An exploration of personal beliefs and values, where they come from, how they are shaped)	RE - Equals Curriculum (Beliefs and values Exploring the deeper meaning of religious symbols. A detailed version of the Christmas story and secular holiday traditions)	Prophets & Saints A more detailed exploration of the lives of Moses, Jesus and Mohammad What do their stories mean to Jews, Christians and Muslims today? Looking at images and spoken traditions in Islam	Prophets & Saints A more detailed exploration of British saints and Easter traditions in the British Isles. Do all traditions come from the Bible?



Blood Heart

Science



Tomorrow's World

Computing



Y6 Computing

Computing



Frozen Kingdoms

Geography

Art and design	Still Life, Natural Forms and Nature Explore the title as a class. Research artists related to theme (the work of William Morris, Georgia O'Keefe and Karl Blossfeldt) Choose favourite artist's work and create a personal response. Add depth to work by exploring different mediums / observational drawings / line / tone / shape and form.	Still Life, Natural Forms and Nature Exploring the work of Karl Blossfeldt. Develop ideas writing about feelings when looking at the work of particular artists. Decide what you would like to develop further and explore in more depth (use of clay/ paper mache). Create a final piece using your chosen artist as inspiration.	Textiles in art Explore the work of artwork of textile artists Alighiero Boetti and Sheila Hicks. as a class. Research artists related to textiles in Art Choose favourite artist's work and create a personal response. Add depth to work by exploring different mediums / observational drawings / line / tone / shape and form	Textiles in art Explore the work of artwork of textile artists Alighiero Boetti and Sheila Hicks, as well as other artists .Develop ideas writing how you felt when looking at the work of particular artists. Decide what you would like to develop further and explore in more depth (use of clay/ paper mache). Create a final piece using your chosen artist as inspiration
Design and technology	JDF - Wind Power - Design and make a prototype for a wind turbine which will produce enough power to meet specific needs.	JDF - Indoor Navigation - Design a prototype that helps people navigate their way around unfamiliar buildings.		
Music	Musical genres study	Music in film and TV - how it is composed and used.		
Physical education	Outdoor and Adventurous -	Outdoor and Adventurous- Orienteering. Pilates		
Personal Development	Addressing individual needs through personalised learning opportunities	Addressing individual needs through personalised learning opportunities	Addressing individual needs through personalised learning opportunities	Addressing individual needs through personalised learning opportunities
Computing	Sorting & Databases: Use software to create a database	Sound & Music, photos: Create a piece of music using loops, pitch, tempo add to / create a trailer, create an audio tour of the school		
Food Tech	Using the Microwave Using the microwave to make a hot food such as jacket potato with different fillings, mug cakes, desserts.	Hot foods for Winter Food and Health: Cooking and Serving Make a selection of hot foods using different cooking methods. Compare the use of microwave, hob and oven.		
Careers	Skills Builder Grow throughout life Listening to and responding to the Careers Adviser about careers – life, learning and work. Complete job profiles with low level of support.	Skills Builder Explore Possibilities Researching the range of workplaces and what it is like to work there.	Skills Builder Managing a Career Independently write a job application for a classroom role and consider what you would look for in a successful candidate.	Skills Builder Create Opportunities Understand what a team is and the different roles in a team including that of leader.
ASDAN (Bronze, Silver or Gold)	Personal Development Programme Communication & My community	Personal Development Programme Sport and leisure & Independent living	Personal Development Programme My environment, Number handling	Personal Development Programme Health and wellbeing, World of work



Champion

Physical education



Maafa

History

Planned term	Summer 1 (header is a placeholder)	Summer 2 (header is a placeholder)
Mathematics	Functional maths using White Rose Maths at an appropriate individual level Ratio & Statistics -Solving problems from charts, averages, fractions	Functional maths using White Rose Maths at an appropriate individual level. Measures -Convert between metric measures, estimating length and capacity
English	Non- Fiction and Media Exploring Media Texts Students working on qualification pathways	Non- Fiction and Media Making notes on a visual text and developing exam skills Students working on qualification pathways
Suggested text	Skin Deep, Life as a Refugee	
Reading and Phonics Skills	RWI Fresh start (for those requiring phonics mastery) Word reading	RWI Fresh start (for those requiring phonics mastery) Word reading
Science	Chemical Changes Develop laboratory skills to investigate and record chemical changes and reactions	Chemical Changes Develop laboratory skills to investigate and record chemical changes and reactions
Humanities	Carnivals More detailed exploration of carnivals and festivals around the world Including Rio and Notting Hill. Looking at some of the problems that the Notting Hill carnival has faced over the years.	Festivals Music and sports festivals Including Glastonbury, the Olympic and Paralympic Games. How political are major sporting events and should the Olympics and Paralympics merge?
Personal, social and health education	PSHE -Jigsaw at the appropriate level (Relationships)Building positive, healthy relationships	PSHE -Jigsaw at the appropriate level (Changing Me) Coping positively with change.
RE	Religion and Stories A more detailed exploration of food rules of Muslims and Jews and why Christians do not follow dietary restrictions	Religion and Stories A more detailed exploration of Summer Solstice and the beliefs of the Native Americans. Finding similarities with other religions.
Art and design	Putting on a show Explore different ways of dressing. Using, paper, bin bags, fabric design and create outfits. Look at and research the work of well know fashion designers as a class. Research Artists related to theme. Choose favourite artist's work and create a personal response. Add depth to work by exploring different mediums / observational drawings / line / tone / shape and form.	Putting on a show Upcycling clothing - what can we add or take away to create a new piece? Create work in the style of a well know designer Develop ideas writing how you felt when looking at the work of particular artists. Decide what you would like to develop further and explore in more depth. Create a final piece using your chosen artist as inspiration.



Champion

Physical education



Maafa

History

Personal Development	Addressing individual needs through personalised learning opportunities	Addressing individual needs through personalised learning opportunities
Careers	Skills Builder Balance Life and Work Understand what a charity is and how charities can create change.	Skills Builder See the bigger picture Identify jobs that are more in demand or have been created because of advances in technology.
ASDAN (Bronze, Silver or Gold)	Personal Development Programme Science and technology, The wider world	Personal Development Programme Expressive arts, Beliefs and values