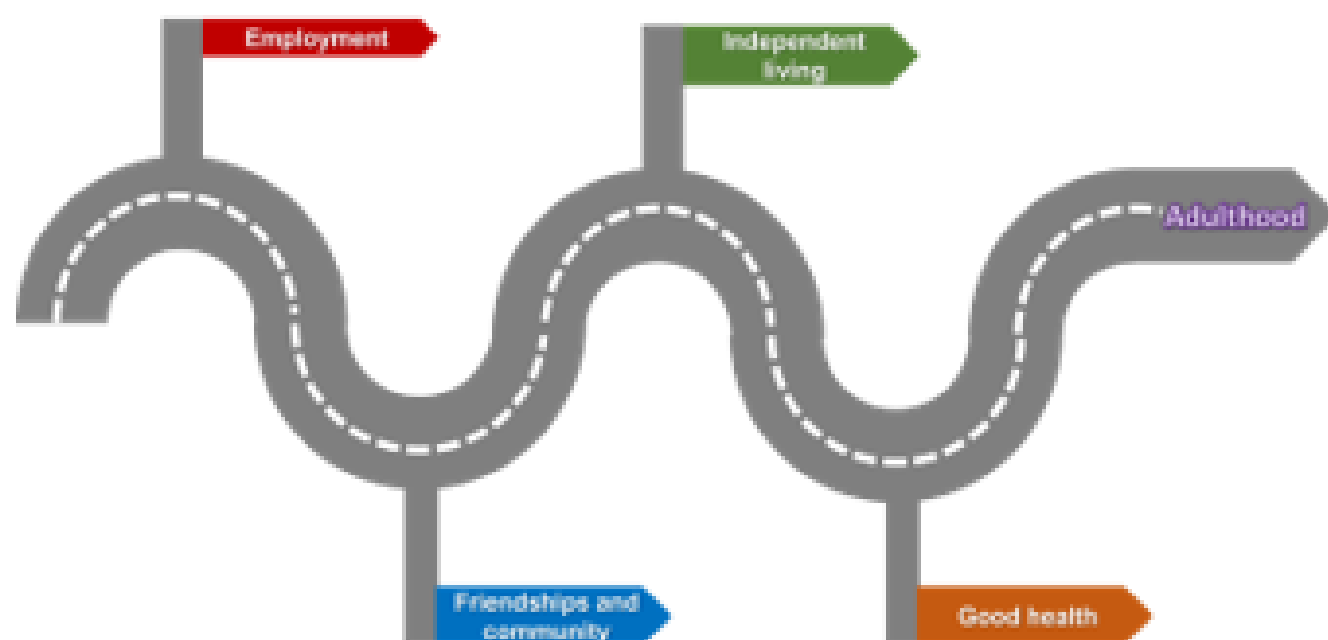




The Peterborough Post-16 Education Offer

A guide to further courses and pathways for learners with Special Educational Needs and Disabilities over 16 years old in Peterborough and surrounding area

Academic year 2023-24



Preparing for
Adulthood



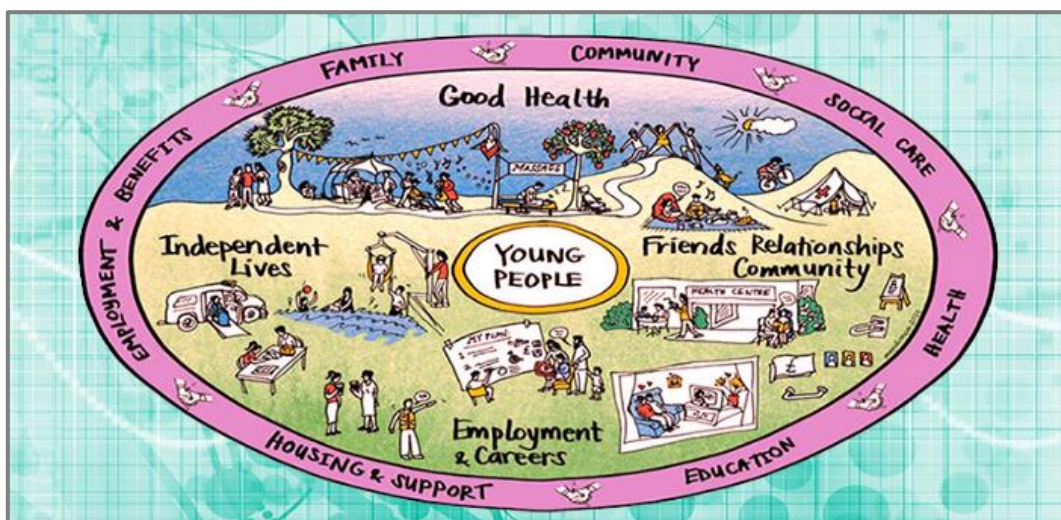
Introduction – now I am 16 or over

This guide is an overview of the various education and training options open to young adults who have special educational needs and disability when making a post 16 or post 19 transition.



If you have an Education, Health and Care Plan (EHCP) the following [video](https://youtu.be/mrYloacGnLI) (<https://youtu.be/mrYloacGnLI>) may help you to understand how you can get involved with planning your future once you are 16.

If you do not have an EHCP, but require support for your education in school or college (SEN Support), you can get involved with planning your future using your 'personal profile'; this is held by the SENCO at your school or college.



This picture is from an organisation called Preparing for Adulthood and helps identify the four key themes (in the large circle) that help young adults with SEND get ready for adult life and lists some of the people or services that can help (those in the purple outer circle).

Peterborough

Post 16 Education Offer

This guide covers several topics around education options for young adults over 16 years:

- How long do I have to be in education or training?
- What type of qualifications are there?
- What types of training are there?
- Where can I study in Peterborough?
- Courses available at Special Schools and Colleges
- Further information

How long do I have to be in education or training?

The law requires all young adults in England to continue in education or training until their 18th birthday. This can be through:

- Full time study in a school, college or with a training provider
- Full time work or volunteering combined with part time education or training leading to a relevant qualification
- An apprenticeship
- A traineeship
- A supported internship

Every young adult between 16-17 years old is entitled to an offer of a suitable place of learning by the end of September, to continue in education or training the following year. The government places a duty on young adults aged 16-17 who do not have sufficient level 3 qualifications to continue in education or training until their 18th birthday.

Young adults with an Education, Health and Care Plan (EHCP) must have the same access to further education until they are 25 years old. That is, they do not have to pay for their courses at college providing they are making progress.

For more information please see the government guide: Participation of young people in education, employment or training -

<https://www.gov.uk/government/publications/participation-of-young-people-education-employment-and-training>

What types of qualifications are there?

There are lots of qualifications at many different levels, some specific to vocations or ways of work. The table below describes the national qualifications levels. The government is conducting a review of post 16 qualifications at level 3 and below in England and therefore this information may change

National Qualification Level	National Curriculum (NC) Level	Vocational level
Pre entry	P-Levels (to be replaced with the Engagement Model from Sept 2020)	Life Skills
Entry Level 1	NC Level 1 Functional Skill	Foundation learning Entry Level Award Certificate Diploma Life skills
Entry Level 2	NC Level 2 Functional Skills	Foundation learning Entry Level Award Certificate Diploma Life skills
Entry Level 3	NC Level 3 Functional Skills	Foundation learning Entry Level Award Certificate Diploma Life skills
Level 1	GCSE Grades 3-1 or D-G	Foundation Learning Traineeships Award Certificate Diploma
Level 2	GCSE Grade 9-4 or A*-C	Intermediate Apprenticeships Level 2 Diplomas NVQ Level 2
Level 3	A-Levels	Advanced Apprenticeships Level 3 Diplomas Extended Diplomas NVQ 3
Level 4	Foundation Degree (Higher Education)	Higher Apprenticeships NVQ Levels 4
Level 5	Foundation degree (Higher Education)	Higher Apprenticeships NVQ Levels 5
Level 6	Undergraduate degree (Higher Education)	
Level 7	Master's degree (Higher Education)	
Level 8	PhD (Higher Education)	

What types of training are there?

In School / College	Mixture of School / College and Workplace
<p>Study programmes (16-19 year olds)</p> <ul style="list-style-type: none"> • Helps working towards qualifications • You can choose the qualifications and skills you work towards • Helps you develop your employability • Course includes maths, English, citizenship and work experience • Mostly college based with some work experience is possible 	<p>Apprenticeships (16+ years old)</p> <ul style="list-style-type: none"> • Gain qualifications and work experience • Usually, 4 days with employer and 1 day at college • Paid! (minimum salary is £3.90 per hour (due to increase in April 2020) for under 19-year-olds – Many employers pay more than this • Available for all ability levels • Can last between 1 and 4 years
<p>Mainstream Courses (16+ years old)</p> <ul style="list-style-type: none"> • Mostly school / college based • Mostly aimed towards qualifications level 2 or 3 • Mostly based with the majority in school / college. • SEND can be supported through high quality teaching and student support services in school/college 	<p>Supported internships (16-24 years old)</p> <ul style="list-style-type: none"> • Structured study programmes focusing on functional skills and courses relevant to placement • Based mostly with employer • Between 6 months – 1 year • Unpaid work placement at least 6 months • Can lead to paid employment • Job coaching to support learners in the workplace
<p>Bespoke courses</p> <ul style="list-style-type: none"> • These are very limited courses • For students who have complex needs that make it very difficult for them to take part in college courses 	<p>Traineeships (16-24 year olds)</p> <ul style="list-style-type: none"> • Work preparation training, often includes; work experience tuition in English & Maths • At least 6 months • Unpaid

Opportunities outside of work and school/college:

Volunteering (Any age)

- Unpaid
- A great way to develop skills, meet new people, and make a difference to other people
- Opportunities available for all abilities, ages and levels of commitment in Peterborough.

Higher Education (18+ years old)

- Usually working towards Level 4-8 qualifications (foundation, undergraduate and postgraduate degrees)
- Usually unpaid and requiring tuition fees (often covered by tuition fee loans)
- Not eligible for EHC Plans but Universities have a duty to make reasonable adjustments for disabled students.
- Students may qualify for Disabled Students Allowance to fund specific help such as note takers, sign language interpreters or specialist IT equipment

Courses available in special schools and colleges

Please have a look at what is available on the next few pages. These courses are updated every year.

How long do courses last? How many days a week could I be studying?

- Most courses last at least one academic year (September-July) but may take longer depending on a student's needs
- Special schools and sixth forms normally plan for 5 days of studying / lessons. The schools offer a 5-day curriculum made up of components from the courses below.
- Colleges normally plan for 2-4 days of lessons/studying but will support students to use the remaining days of their week for exploring the pathways into employment, healthy living, friendships and community and independent living

How do I get on a course?

- If you are interested in a course, please see the prospectus or contact the school / college for more information about entry requirements and how to apply.
- Your school or college can help you with this
Are you hoping to go to college in September? Over the last couple of years and because of COVID 19 our colleges have produced a guide to applications and open days and visits to help with your transition process. View the [Are you hoping to go to college in September \(Local Offer\) webpage](#) for more information


Please be aware that **admissions requirements for some of our post 16 special schools is under review.** Contact schools for further updates

The Peterborough Post 16 Education Offer: Courses for learners with SEND - Special Schools

Heltwate School (Olympic College)

Website: www.heltwate.co.uk


Telephone: 01733 262878

Course	Level	Potential progression
Heltwate School (Olympic College) ASDAN: - Personal Progress 2020 - Work right	Website: www.heltwate.co.uk Telephone: 01733 262878 Entry Level 1	 • Vocational courses • Independence course
EQUALS: • Equals moving on Curriculum • Equals moving on Maths • Equals moving on Literacy • Equals moving on ICT	Entry Level 1	• Vocational courses • Independence course
AQA Unit Awards Scheme	Pre-entry level 1 Entry level 1	• Vocational courses • Independence course

Lime Academy Orton


Website www.limeacademyorton.org

Telephone: 01733 391800

Lime Academy Orton	Website www.limeacademyorton.org Telephone: 01733 391800	
Course	Level	Potential progression
Engage Lime Academy curriculum	<ul style="list-style-type: none"> • Duke of Edinburgh Bronze • PfA outcomes 	Community Care pathway
Inspire Lime Academy curriculum	<ul style="list-style-type: none"> • Duke of Edinburgh Silver • NCS (National Citizenship Service) • PfA(Preparation for Adulthood) outcomes • Bespoke work experience at our Charity shop and café. 	College programme
Empower Lime Academy curriculum	<ul style="list-style-type: none"> • Duke of Edinburgh Silver • NCS (National Citizenship Service) • PfA outcomes • Bespoke work experience at our Charity shop and café. 	College programme

Marshfields School

Website: www.marshfields.co.uk Telephone: 01733 568058

Marshfields School	Website: www.marshfields.co.uk Telephone: 01733 568058	 Marshfields
Course	Level	Potential progression
City and Guilds Introduction to the Hospitality and Catering Industry	Level 1	<ul style="list-style-type: none"> • Hospitality level 2
BTEC in Digital Media	Level 1	<ul style="list-style-type: none"> • College Level 2
BTEC Sport	Level 1	<ul style="list-style-type: none"> • College Level 2
ASDAN Bronze	Entry 1	<ul style="list-style-type: none"> • Entry 2 Silver
ASDAN Silver	Entry 2	<ul style="list-style-type: none"> • Entry 3 Gold
ASDAN Gold	Entry 3	<ul style="list-style-type: none"> • College Level 1
GCSE Art & Design	Level 1	<ul style="list-style-type: none"> • College Level 1 Certificate/Level 2 • College Level 2
CACHE Childcare	Entry 3 Level 1	<ul style="list-style-type: none"> • Childcare Level 1 • Childcare Level 2
BTEC Land Based Horticulture	Entry 3 Level 1	<ul style="list-style-type: none"> • Horticulture - based Level 1 • Horticulture - based Level 2 (at college)
Duke of Edinburgh Award	Bronze Silver	<ul style="list-style-type: none"> • Silver • Gold
National Citizenship Service (NCS)	Award	


EXCEL Awards Maths-Number and Measure	Level 1 Level 2	<ul style="list-style-type: none"> • College level 2 • College GCSE Foundation then Higher
IMI Introduction to Motor Vehicle Industry	Entry 3	<ul style="list-style-type: none"> • College Level 1
Functional Skills English	Level 1 Entry 1 Entry 2 Entry 3	<ul style="list-style-type: none"> • College Level 2 / GCSE • College Entry Level 2 • College Entry Level 3 • College Level 1 Functional /GCSE
Functional Skills Maths	Entry Level 2 Entry Level 3	<ul style="list-style-type: none"> • College Entry Level 3 • College Level 1 Functional /GCSE

Courses for learners with SEND – Colleges *colleges offer a wide variety of courses. The courses listed here are pre level 2.

City College Peterborough

Telephone: 01733 761361

Website: www.citycollegepeterborough.ac.uk

City College Peterborough		Website: www.citycollegepeterborough.ac.uk	 City College Peterborough
Course	Level	Age	Potential progression
Step Up (Aim Award accredited)	Entry level 1 Entry level 2 Entry level 3 Level 1	16-19 years (14-25 with EHCP)	<ul style="list-style-type: none"> Occupational studies Level 1 Pathway Internship
Skills for Independence (Unaccredited- a course designed to build your confidence, self-esteem and independence.)	Pre-entry Entry level 1 Entry level 2 Entry level 3	16-19 years (14-25 with EHCP)	<ul style="list-style-type: none"> Step up Occupational studies Day Services (transition out of college)
Occupational studies (accredited with NCFE)	Entry level 1 Entry level 2 Entry level 3 Level 1	16-19 years (14-25 with EHCP)	<ul style="list-style-type: none"> Level 1 Pathway Internship Supported Internship
Vocational pathways (accredited) Pathways include: <ul style="list-style-type: none"> Business Enterprise (Entry 3, Level 1&2) Childcare (Level 1 and 2) Health and Social Care (level 1,2 & 3 as well as T levels) Hairdressing (Level 1 and 2) 	Entry 3 Level 1 Level 2	16-19 years (14-25 with EHCP)	<ul style="list-style-type: none"> Level 2 courses Supported internships

City College Peterborough

Website:
www.citycollegepeterborough.ac.uk




Course	Level	Age	Potential progression
<ul style="list-style-type: none"> Barbering (Level 2, Level 1 Hairdressing required) Hospitality and Catering (Levels 1 & 2) Motor vehicle (Entry Level & Level 1) Skills for creative industries (Level 1 & 2 portfolio) Animal Care (Entry and level 1) ICT- <i>Information, Communication & Technology</i> (Entry and level 1&2) 			
S.E.A. (Support Educate Autism)	N/A	16-19 years (14-25 with EHCP)	Any study programme course
ICE (can be accredited if appropriate) Built with those in mind that may have been out of education for a while, have significant difficulties around education or have significant needs that need support reintegrating into a mainstream education provision.	N/A	16-19 years (14-25 with EHCP)	Any study programme course
Foundation internships	Work Experience English Maths	16-19 years (14-25 with EHCP)	<ul style="list-style-type: none"> Supported Internships Employment
Supported internships (Can be accredited if appropriate)	Work experience	16-19 years (14-25 with EHCP)	Employment
ESOL (English for Speakers of Other Languages)	Pre-entry Entry level 1 Entry level 2 Entry level 3 Level 1&2	16-19 years (14-25 with EHCP)	<ul style="list-style-type: none"> Level 1 & 2 Vocational Pathways Supported Internship courses

Peterborough College

Website: www.peterborough.ac.uk

Telephone: 0345 8728722

<p>Peterborough College</p>	<p>Website: www.peterborough.ac.uk Telephone: 0345 8728722</p>		
Course	Level	Age	Potential progression
<p>Vocational Courses:</p> <ul style="list-style-type: none"> • Accelerate and Accumulate (certificate in Vocational Studies) • Applied Science • Animal Care • Art and Design • Electrical Installations • Introduction to Hair and Beauty • Light Vehicle Maintenance and Repair • Bricklaying • Business • Engineering • Carpentry • Catering • Sport and Leisure • Uniformed Services • Information Technology (IT) • Health, Social and Childcare • Plumbing • Travel and Tourism • Performing Arts • Digital Media 	<p>Level 1</p>	<p>16-19 (25 with EHCP)</p>	<ul style="list-style-type: none"> • Level 1 • Level 2 • Employment • Apprenticeship • Supported Internship


Peterborough College

Website: www.peterborough.ac.uk
Telephone: 0345 8728722



Peterborough College


Course	Level	Age	Potential progression
Bespoke courses	All levels where appropriate	16-19 (25 with EHCP)	<ul style="list-style-type: none"> • Vocational level 1 • Level 2 • Employment • Apprenticeship • Supported Internship
Care (accredited with Gateway)	Entry level 3	16-19 (25 with EHCP)	<ul style="list-style-type: none"> • Level 1 Health and Social
ESOL (English for Speakers of Other Languages) (Accredited with Pearson)	Pre entry Entry level 1 Entry level 2 Entry level 3	16-19 (25 with EHCP)	<ul style="list-style-type: none"> • Further levels ESOL • Vocational courses
Skills in Hospitality and Catering (Accredited with Gateway)	Entry level 3	16-19 (25 with EHCP)	<ul style="list-style-type: none"> • Level 1 Catering • Level 2 Catering
Introduction to Vehicle Technology (accredited with IMI- Institute of the Motor Industry)	Entry level 3	16-19 (25 with EHCP)	<ul style="list-style-type: none"> • Level 1 Motor Vehicle
Personal Progression (accredited with RARPA based on individual need)	Pre-entry Entry level 2	16-19 (25 with EHCP)	<ul style="list-style-type: none"> • Social care • Further levels of Essential Skills • PSD
Personal and Social Development (PSD) (accredited with ASDAN)	Entry level 3 Level 1	16-19 (25 with EHCP)	<ul style="list-style-type: none"> • Next level of PSD • Supported Internship
Employability (accredited with ASDAN)	Level 1	16-19 (25 with EHCP)	<ul style="list-style-type: none"> • Employment • Supported Internship • Mainstream level 1
Towards Vocational (accredited with Gateway)	Entry level 3 Level 1	16-19 (25 with EHCP)	<ul style="list-style-type: none"> • Mainstream level 1 • Employment • Supported Internship

Peterborough College		Website: www.peterborough.ac.uk Telephone: 0345 8728722		 Peterborough College	
Course	Level	Age	Potential progression		
Supported Internship	N/A	16-19 (25 with EHCP)	<ul style="list-style-type: none"> • Employment 		

Stamford College

Website: www.stamford.ac.uk

Telephone: 01780 484300

Stamford College		Website: www.stamford.ac.uk Telephone: 01780 484300		 Stamford College <small>Part of the Inspire Education Group</small>
Course	Level	Age	Potential progression	
Exploring careers in Land-Based Industries (Animal and Horticulture) (Accredited with RARPA and Gateway Qualifications Entry Level 2 Certificate in Preparation for Employment)	Entry level 2 Entry level 3	16-19 (25 with EHCP)	<ul style="list-style-type: none"> Supported internships Transition pathways to mainstream college Employment 	
Exploring careers in Services Industries (Catering and retail) (Accredited with RARPA and Gateway Qualifications Entry Level 2 Certificate in Preparation for Employment)	Entry level 2 Entry level 3	16-19 (25 with EHCP)	<ul style="list-style-type: none"> Supported internships Transition pathways to mainstream college Employment 	
Independent living (Life and Work) (Accredited with RARPA)	Entry level 1 Entry level 2	16-19 (25 with EHCP)	<ul style="list-style-type: none"> Exploring careers courses Transition to supported living 	
Independent Living Skills (accredited with RARPA)	Entry level 1	16-19 (25 with EHCP)	<ul style="list-style-type: none"> Exploring careers courses Transition to supported living 	
Pathways (accredited with Gateway Qualifications Certificate in Progression Entry level 3)	Entry level 3	16-19 (25 with EHCP)	<ul style="list-style-type: none"> Mainstream courses in vocational area Supported Internship Employment 	
Supported internship (Gateway Qualifications Entry Level 3 Award in Preparation for Employment)	Entry Level 3 Level 1	18-25 with EHCP	<ul style="list-style-type: none"> Employment Apprenticeship 	
Bespoke timetables for learners with Vision, Hearing or dual impairments				

Further sources of information and guidance

Provider	Description	Contact information
Funding of students aged 16-25 with SEND	A guide with information on the way the Education and Skills Funding Agency (ESFA) and, in some cases, Local Authorities will calculate and allocate funding to institutions who provide education to young adults with SEND	https://bit.ly/3bVHCm7
16-19 Bursary Fund	<p>You could get a bursary via your college offer, to help with education-related costs if you are 16-19 years old and studying at school or college (not University) in England, on a training course.</p> <p>This will include unpaid apprenticeships if you receive Personal Independence Payment, or are in Care, are a Care leaver or receive Universal Credit. You can spend the money on things like clothing, books and other equipment for your course, transport and lunch on your study days.</p>	<p>0300 200 3300</p> <p>www.gov.uk/1619-bursary-fund/overview</p>